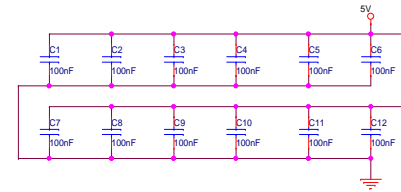
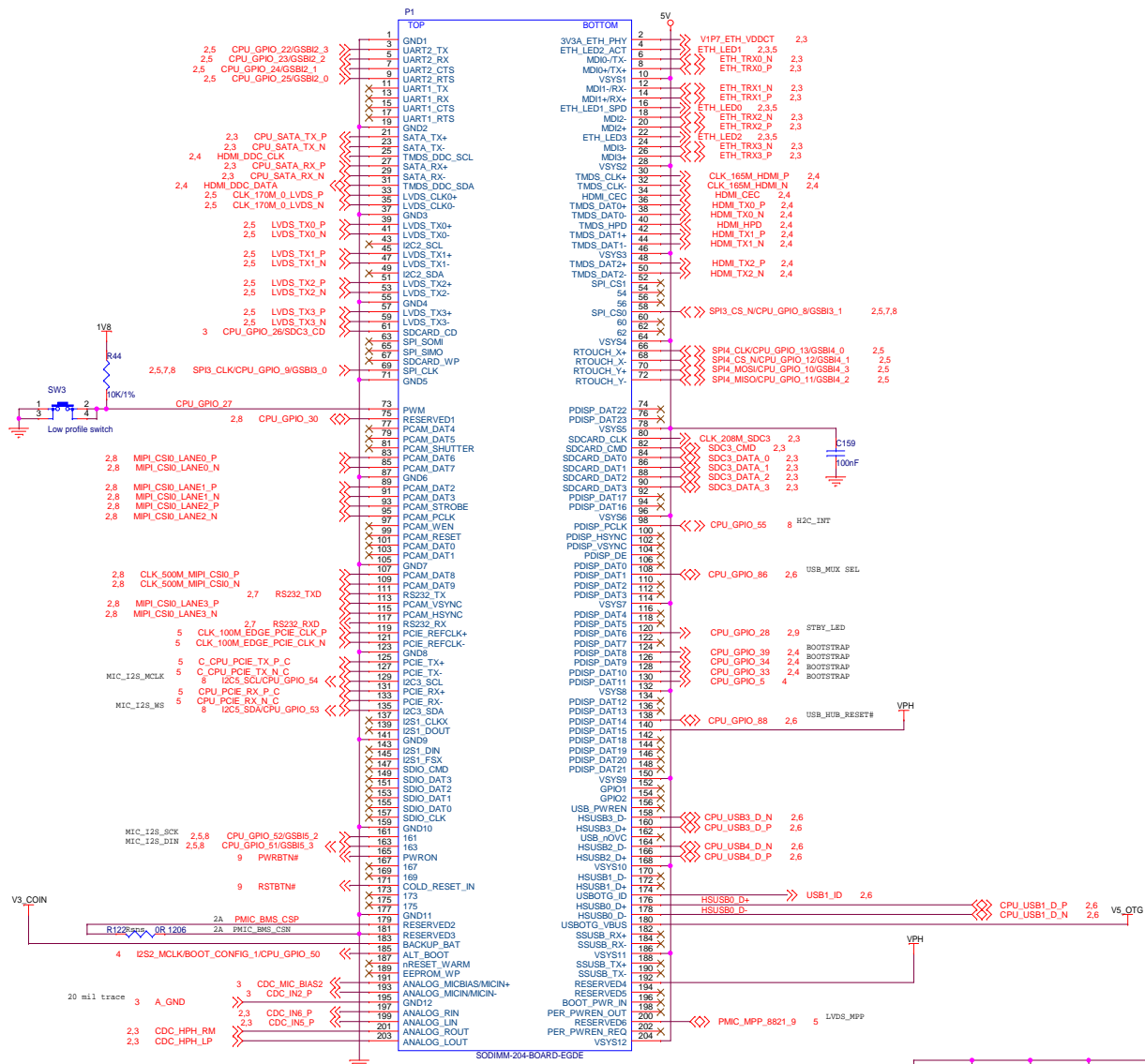


SB-QS600 rev 1.2

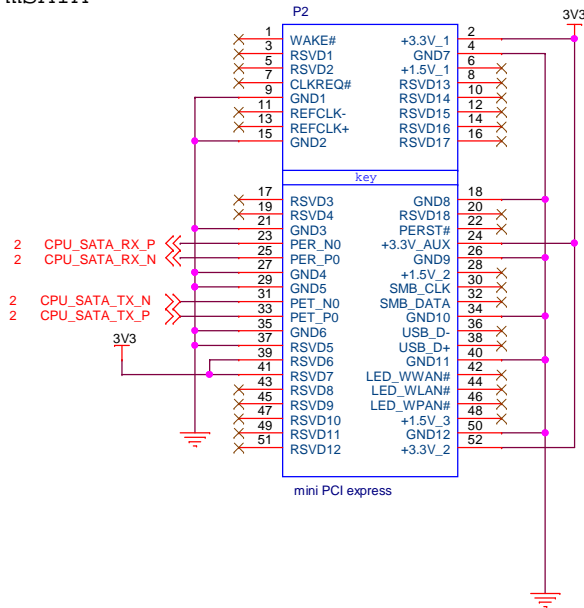
PAGE	FUNCTION
01	INDEX
02	SODIMM
03	CONNECTORS 1
04	CONNECTORS 2
05	CONNECTORS 3
06	USB_HUB
07	UART2USB
08	HDMI2CSI
09	PWR
10	Mechanical parts

I2C addresses

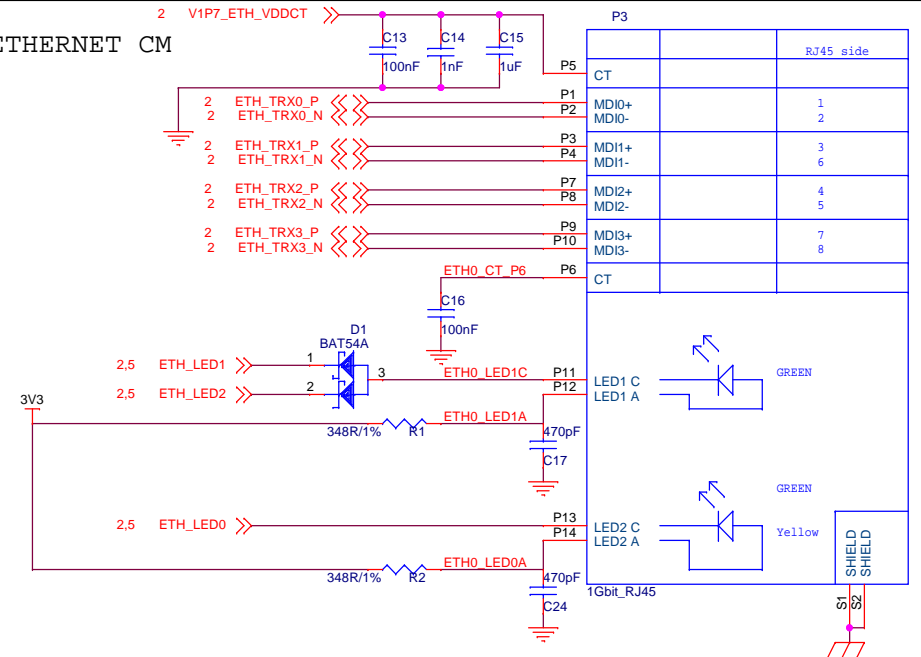
PAGE	FUNCTION
50H	EEPROM



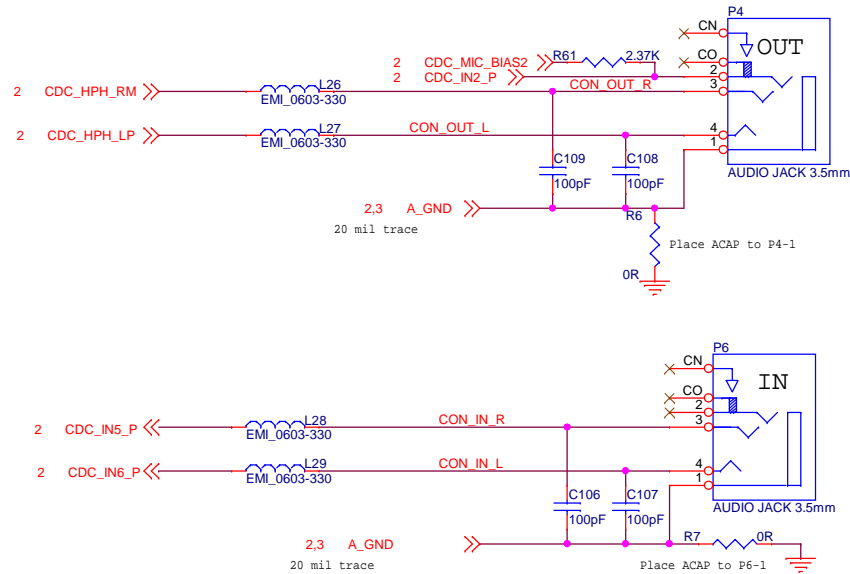
mSATA



ETHERNET CM

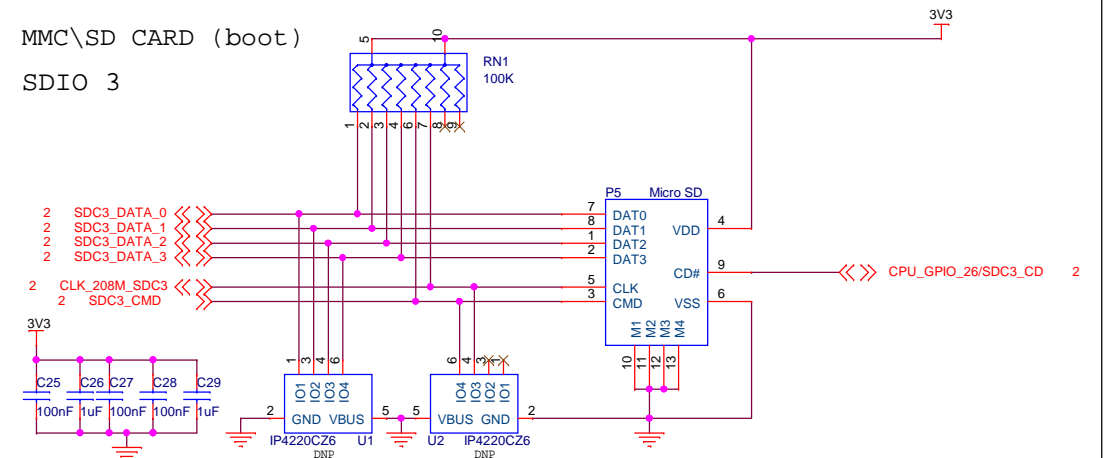


AUDIO



MMC\SD CARD (boot)

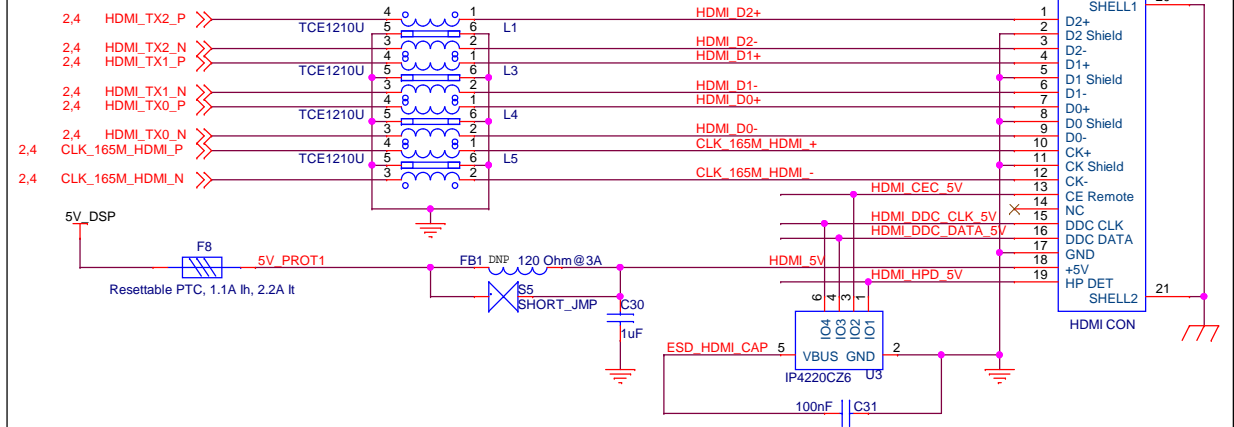
SDIO 3



CompuLab Ltd. (972) 4 8290100
P.O.Box 66
Nesher 36770, Israel
All Right reserved.
Unauthorized duplication prohibited

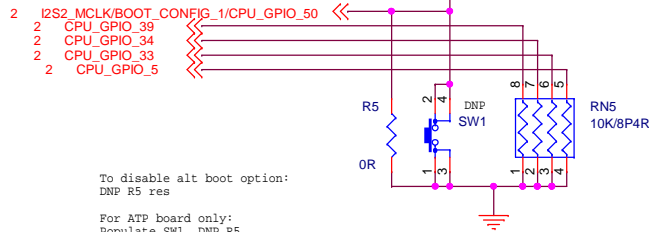
Size	Rev
B	1.2
Title	SB-QS600 03 Connectors
Document Number:	8000020000
Date:	Tuesday, January 06, 2015
Sheet	3 of 11

HDMI CM



BOOT STRAP

DNP all if bootstrap fuses blown on CM-QS600



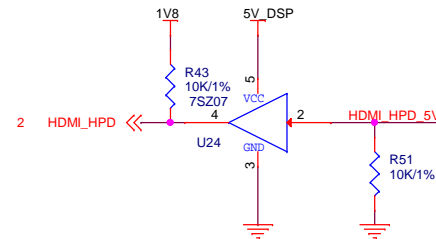
To disable alt boot option:
DNP R5 res

For ATP board only:
Populate SW1, DNP R5

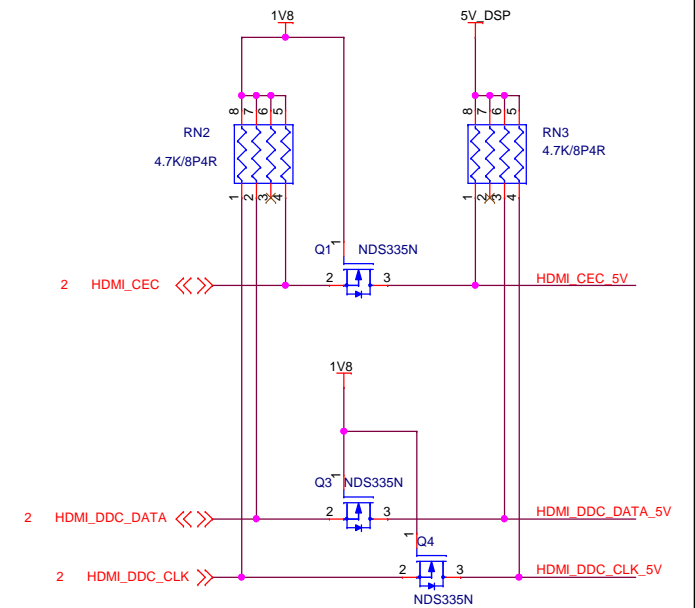
Boot Config. Options

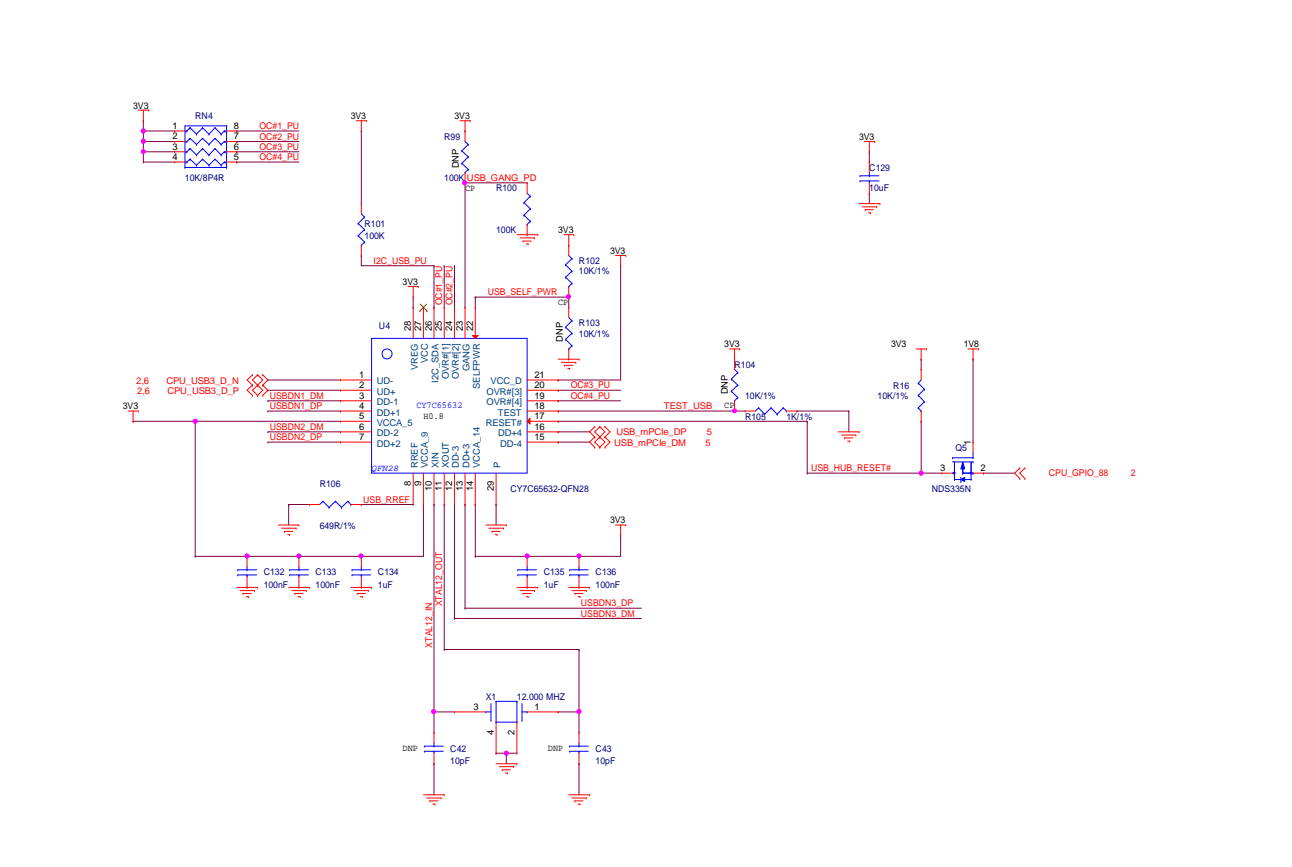
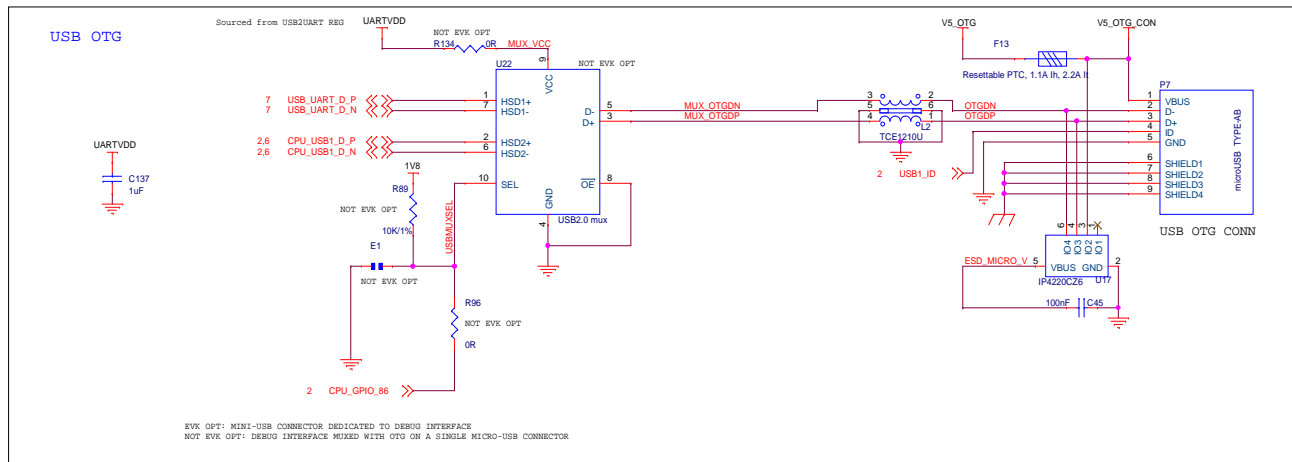
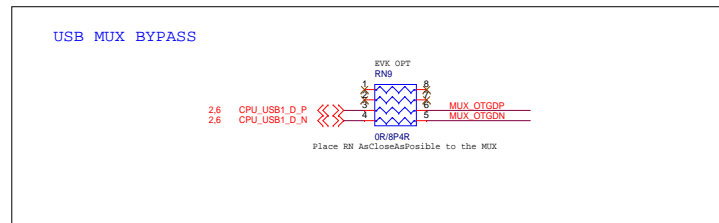
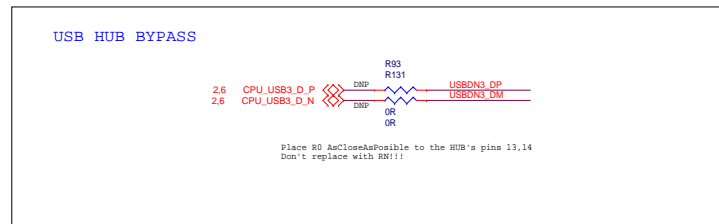
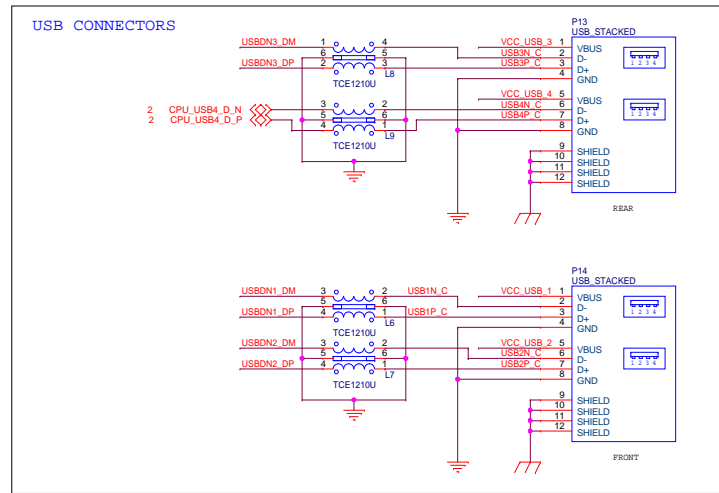
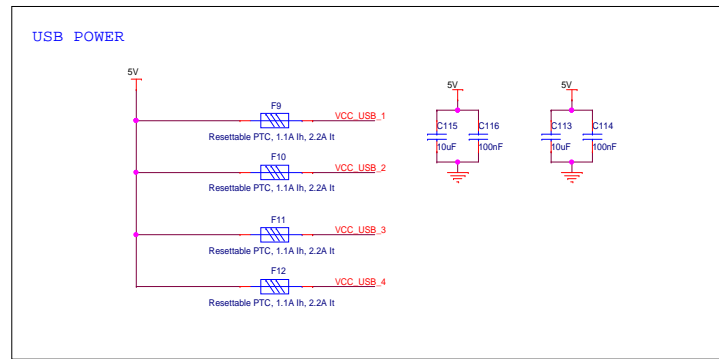
BOOT_CONFIG[5:0]	Boot Options
000000	SDC3 followed by HS-USB
000001	SDC3 followed by SDC1
000010	SDC3 followed by SDC2
000011	SDC1 (eMMC), default device
000100	SDC2

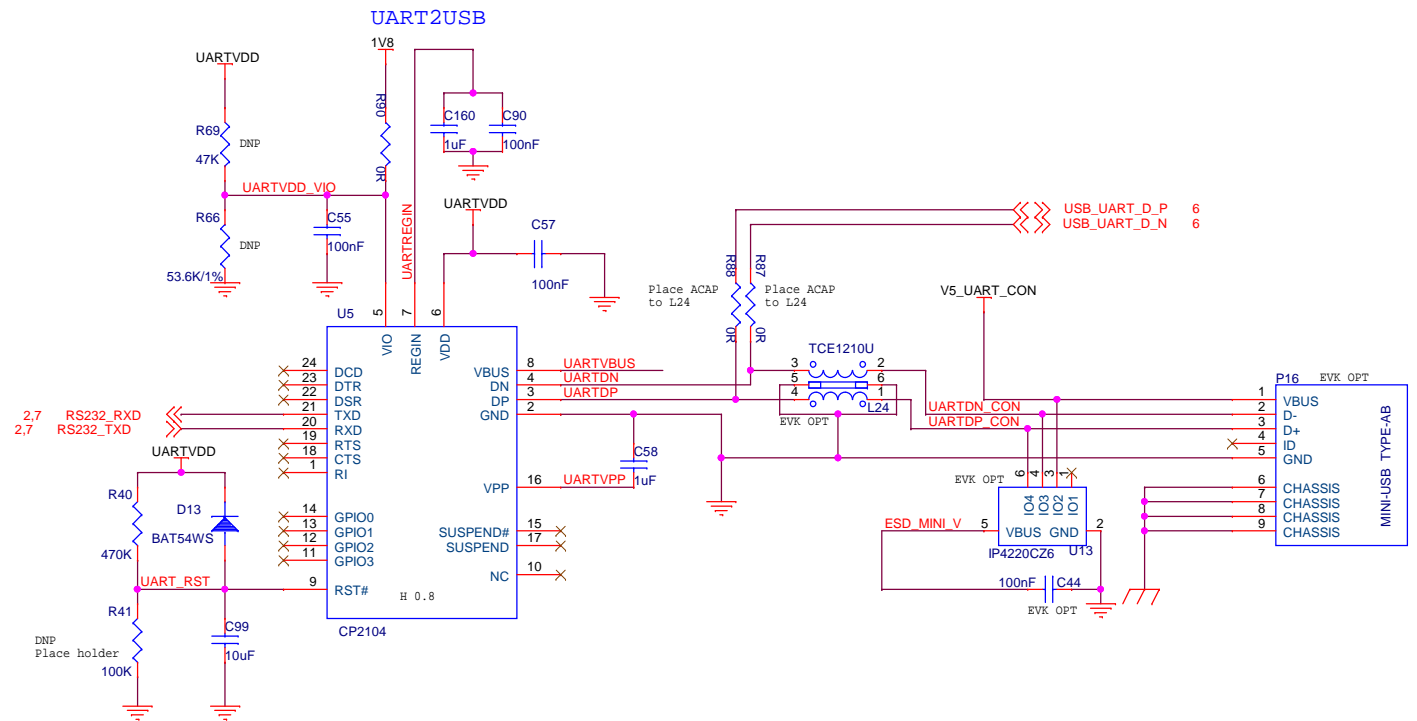
HPD



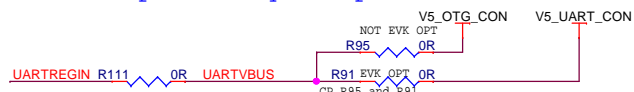
HDMI LEVEL TRANS







VBUS/SELF powered system provisions



DNP

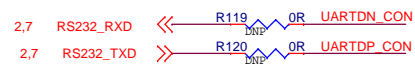
VBUS powered as default

For self powered refer
CP2104 DS pl8 note 5

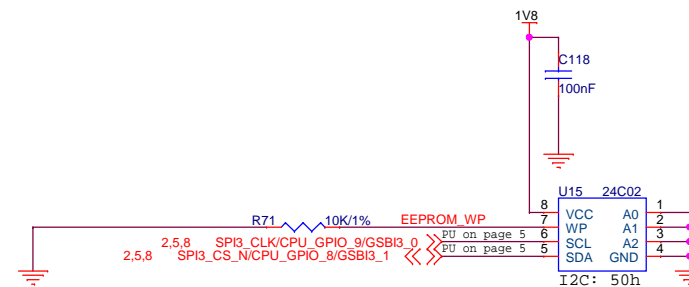
DNP depends on external
usb connector used

EVK OPT: MINI-USB CONNECTOR DEDICATED TO DEBUG INTERFACE
NOT EVK OPT: DEBUG INTERFACE MUXED WITH OTG ON A SINGLE MICRO-USB CONNECTOR

UART2USB BYPASS



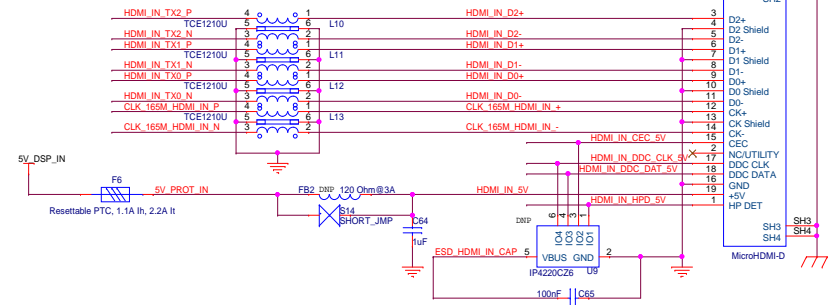
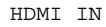
SB EEPROM



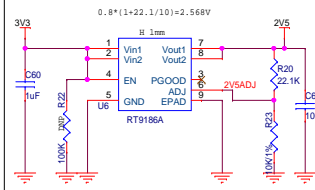
CompuLab Ltd. (972) 4 8290100
P.O.Box 66
Nesher 36770, Israel
All Right reserved.
Unauthorized duplication prohibited

Size	Title	Document Number	Date	Sheet	of	Rev
B	SB-QS600 07 UART2USB, EEPROM	8000020000	Tuesday, January 06, 2015	7	11	1.2

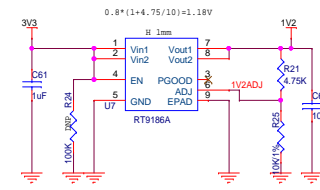
HDMI2CSI (HDMI IN)



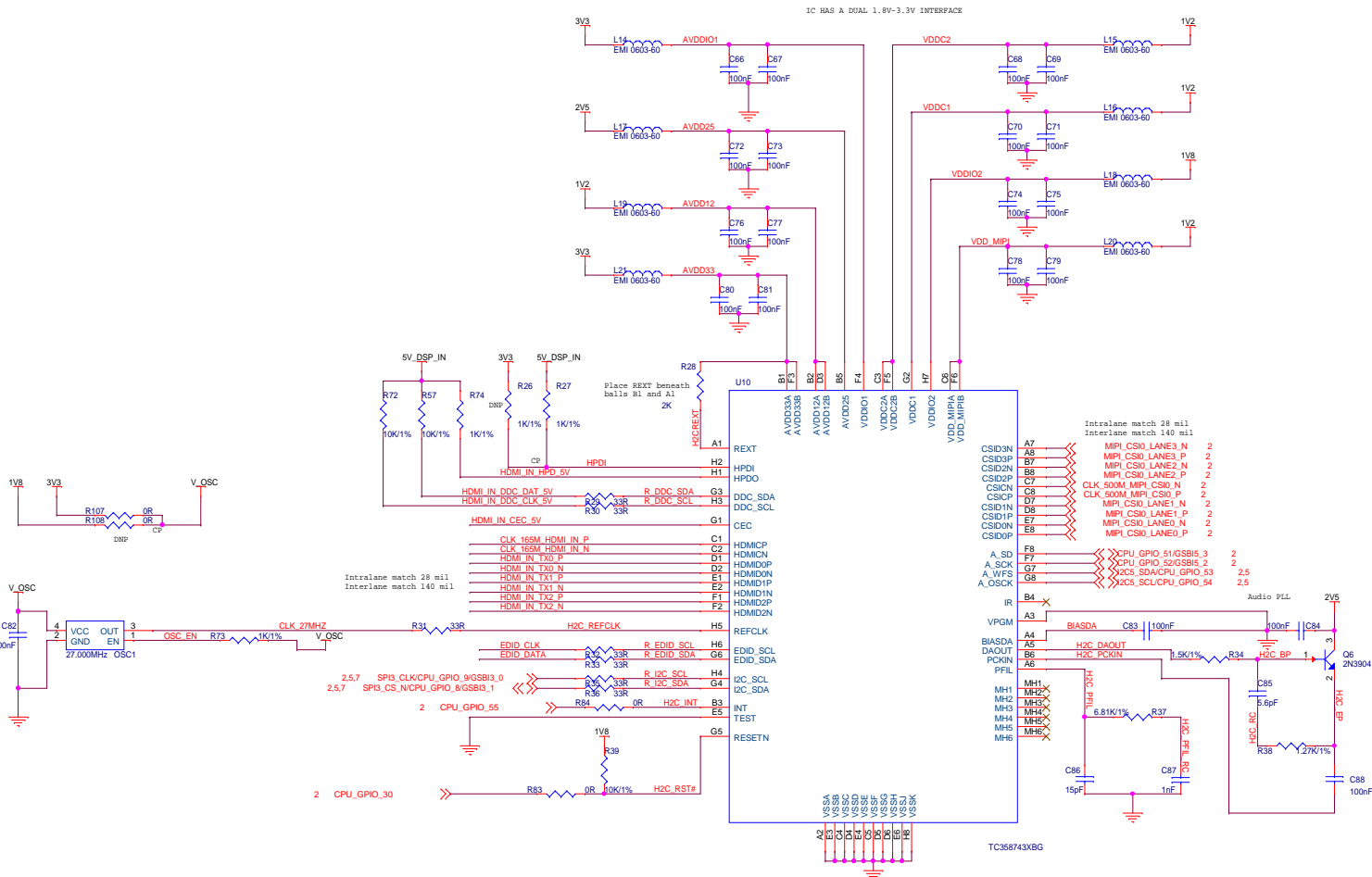
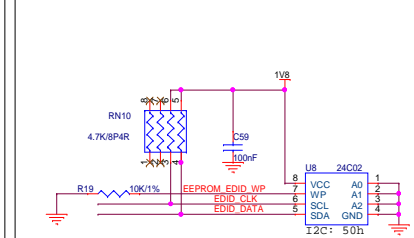
2V5_DC 500mA

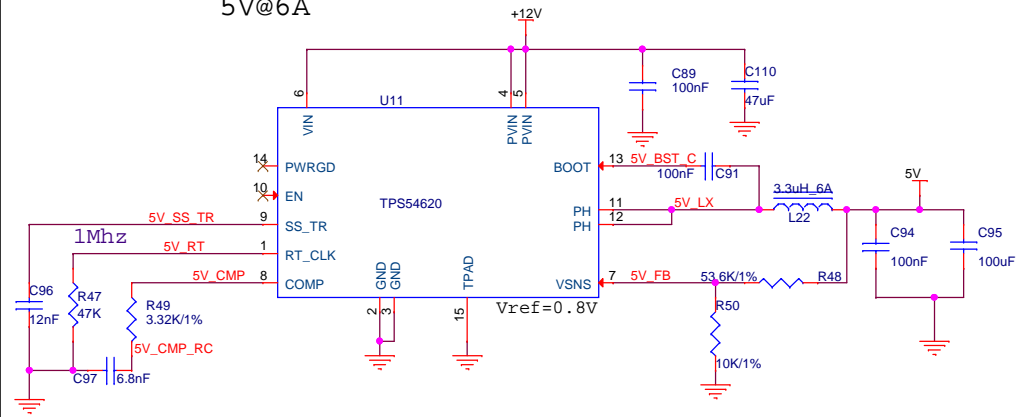
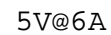


1V2_DC 500mA

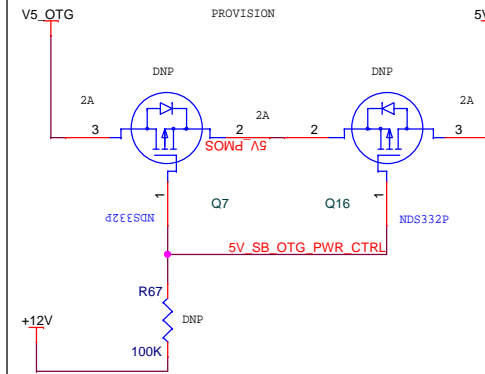


EDID EEPROM

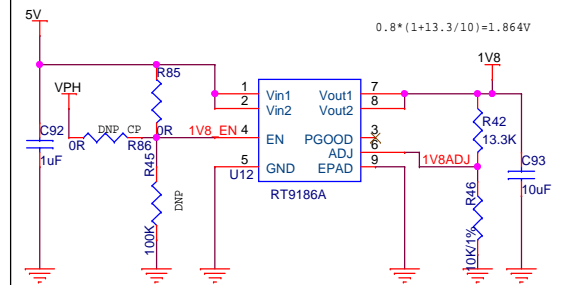
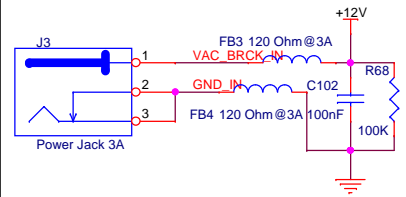




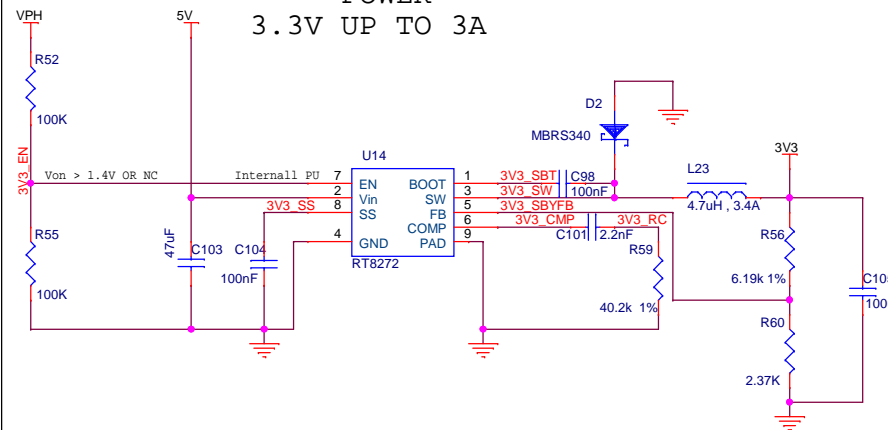
OTG	SB	POWER	SOURCE	SELECT
-----	----	-------	--------	--------



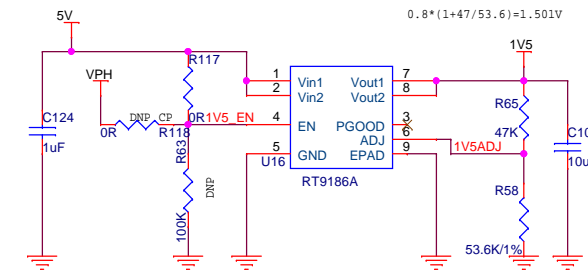
1V8_DC 500mA

POWER
JACK

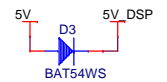
POWER
3.3V UP TO 3A



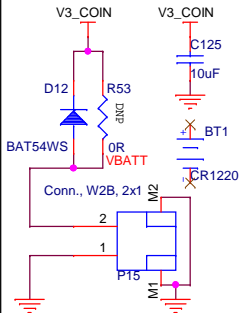
1V5_DC 500mA PCIe OPT



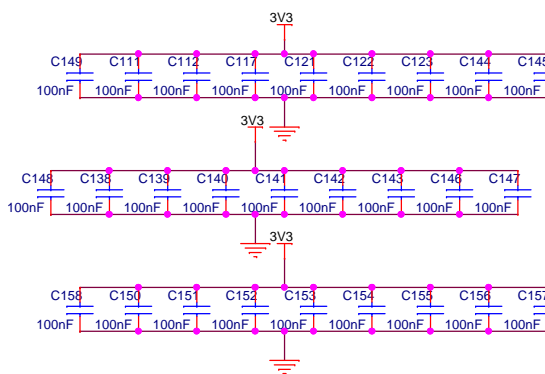
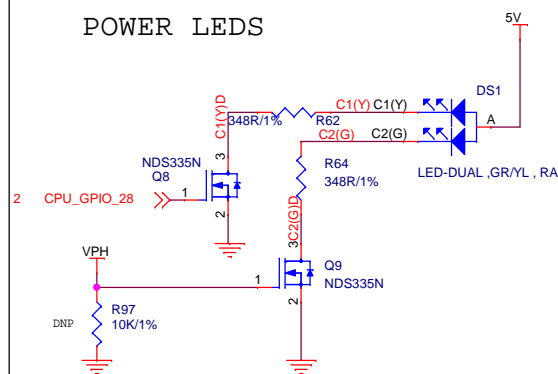
5V for
HDMI DDC



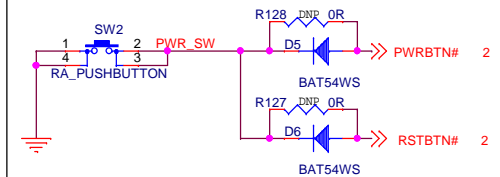
RTC BACKUP POWER



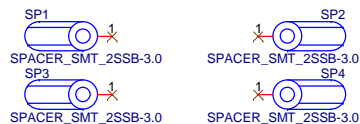
POWER LEDS



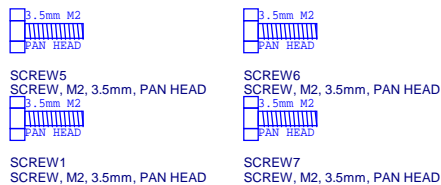
ON/OFF



MECHANIC SPACERS



3.5mm SCREWS



SB-QS600 rev 1.2

Change notes

Date	Description
------	-------------

	Added OTG_VBUS supply option to USB MUX
	Dedicated HDMI_5V_IN source, added PU to DDC
	Fixed LVDS I2C net names
	PCIe I2C channel changed to I2C3
	Added R0 to MUX VCC
	Shorted R92
	Added R0 serial res to I2C5 to isolate channel in VI opt



CompuLab Ltd. (972) 4 8290100
P.O.Box 66
Nesher 36770, Israel
All Right reserved.
Unauthorized duplication prohibited

Size B	Title SB-QS600 12 NTES	Rev 1.2
	Document Number: 8000020000	
Date: Tuesday, January 06, 2015	Sheet 11 of 11	