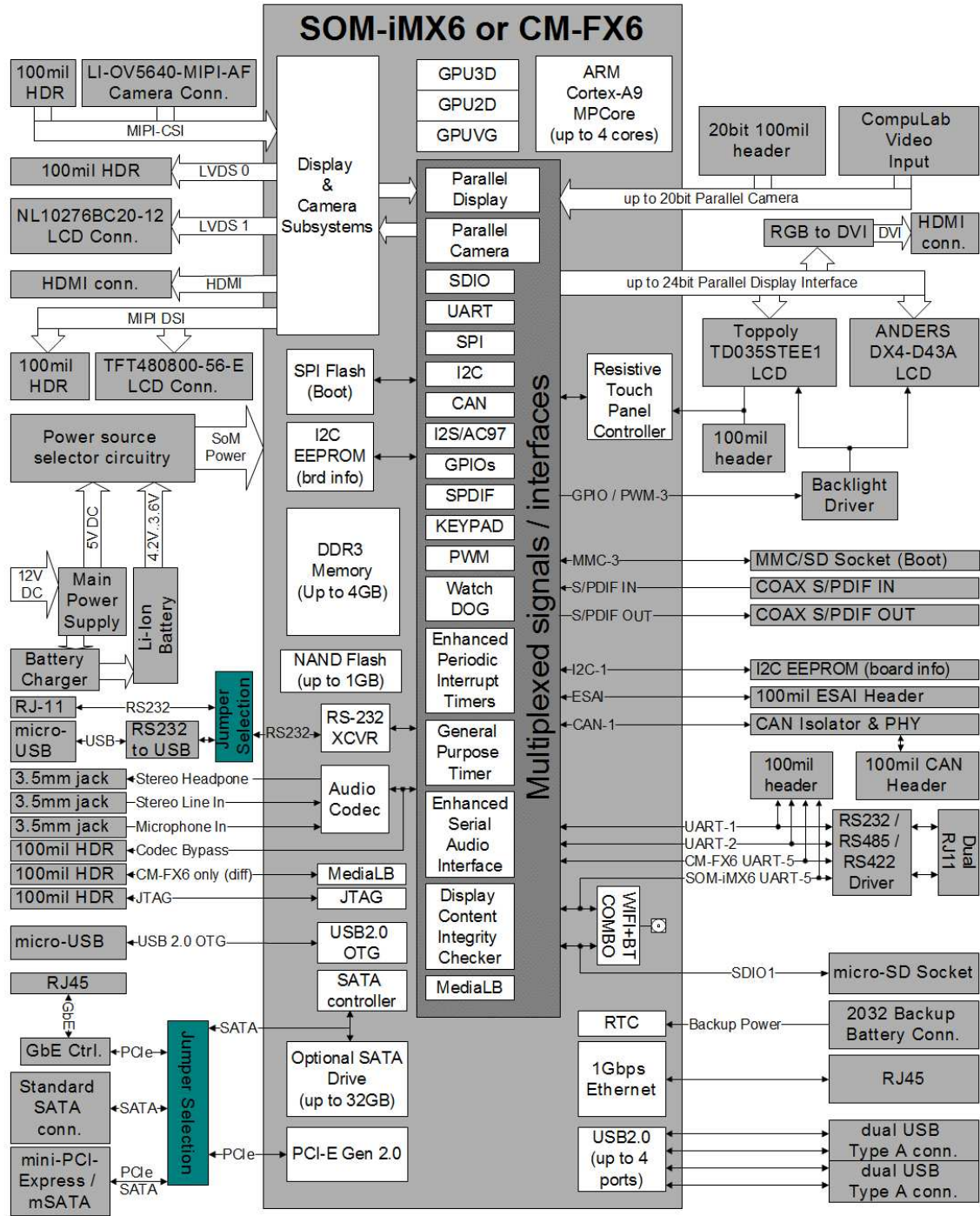


# SB-FX6 rev 1.2

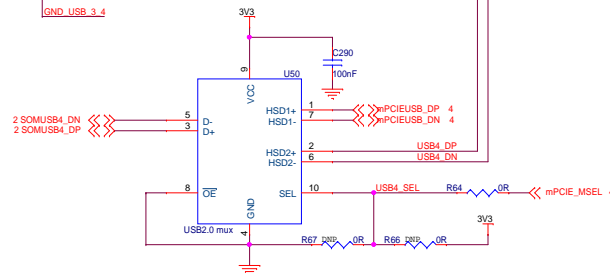
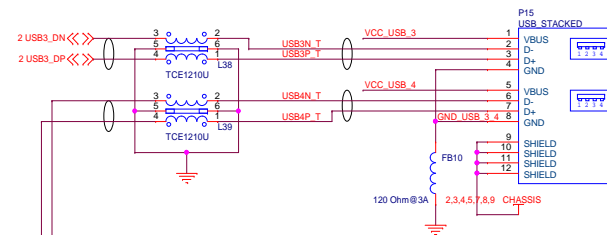
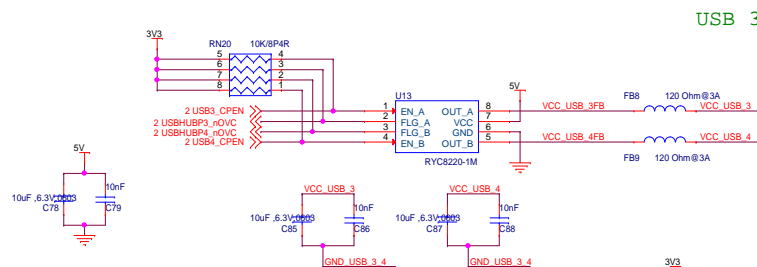
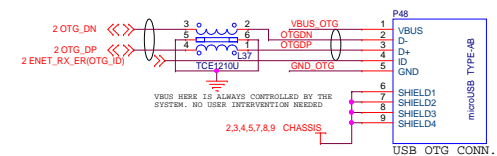
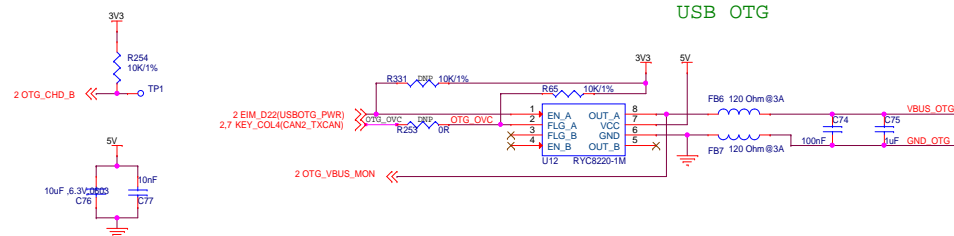
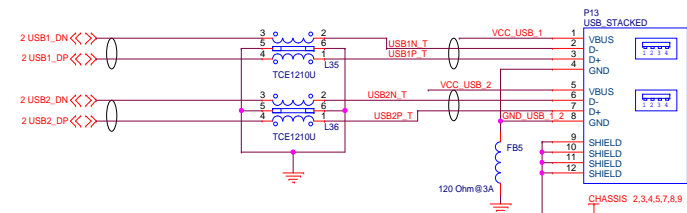
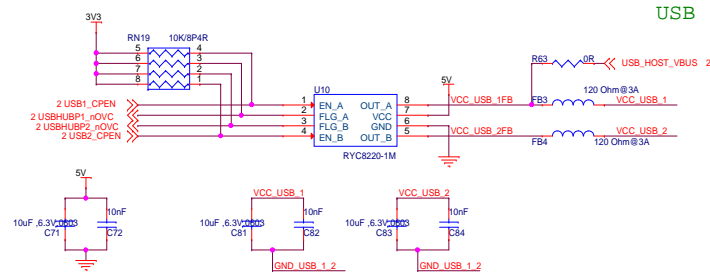
PAGE	CONTENTS
01	INDEX
02	CAMI, MECHANICS & OTHER
03	USB
04	PCIe, SATA, 2nd Ethernet
05	DISPLAY OPTIONS
06	CAMERA OPTIONS
07	UART & I2C
08	MISC
09	POWER
10	PRODUCTION PROVISIONS
11	DESIGN INFORMATION

ZZ1  
PARSER\_VERSION\_1.0

PCB1  
PCB, SB-FX6 Rev 1.2







DIFFERENTIAL IMPEDANCE FOR USB IS 90 ohm





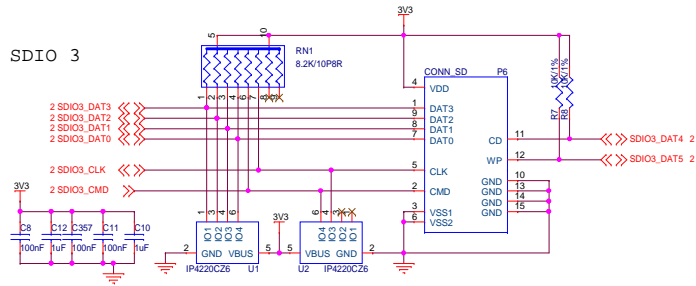






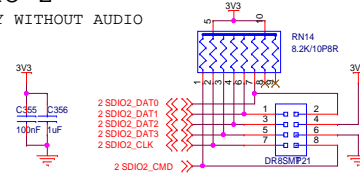
## MAIN MMC\SD CARD (bootable)

### SDIO 3

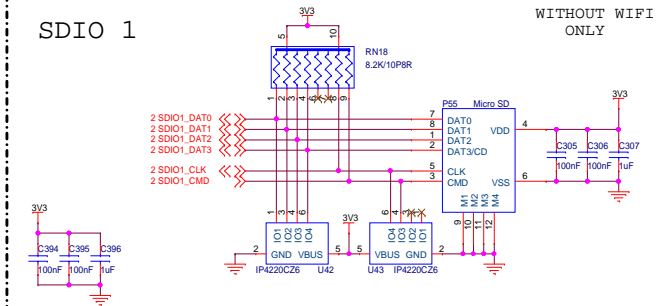


## SDIO 2

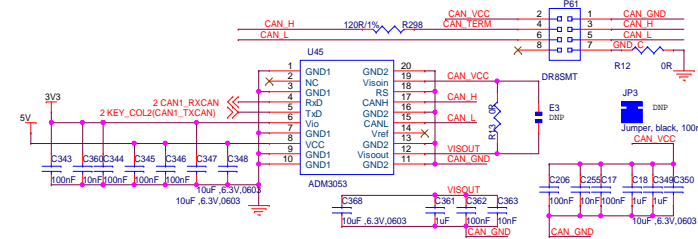
ONLY WITHOUT AUDIO



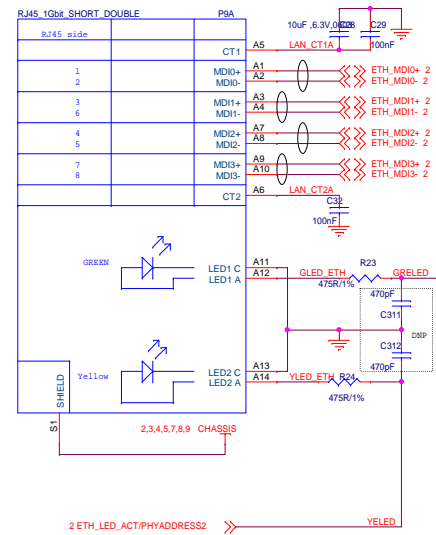
## SDIO 1



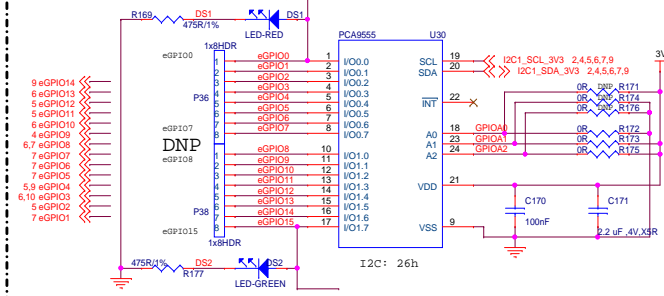
## CAN ISOLATION, POWER & PHY



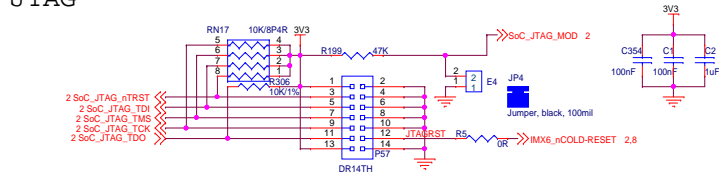
## MODULE ETHERNET



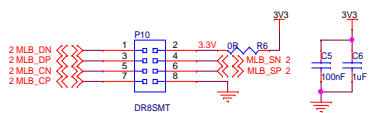
## AUX. GPIO CONTROLLER



## JTAG



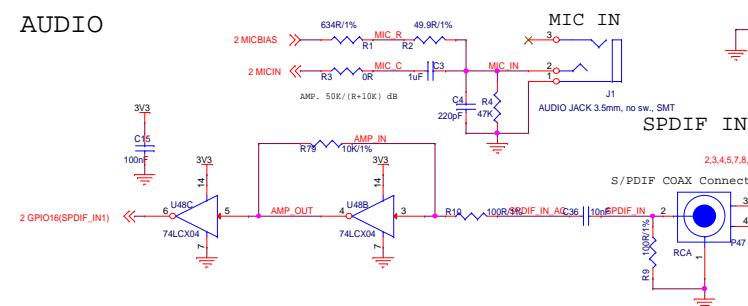
## MediaLB



## TOUCH SCREEN HEADER



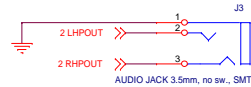
## AUDIO



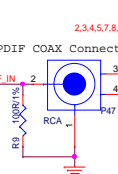
### LINE IN



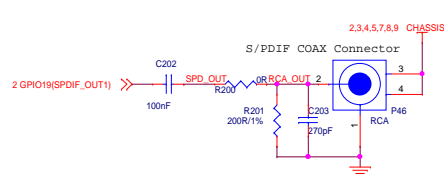
### AUDIO OUT



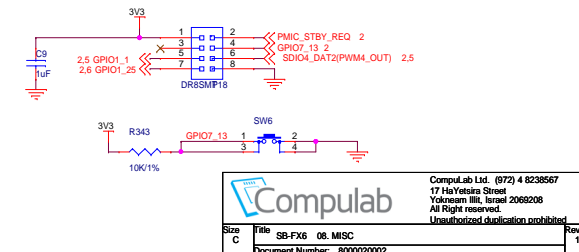
### SPDIF IN



### SPDIF OUT



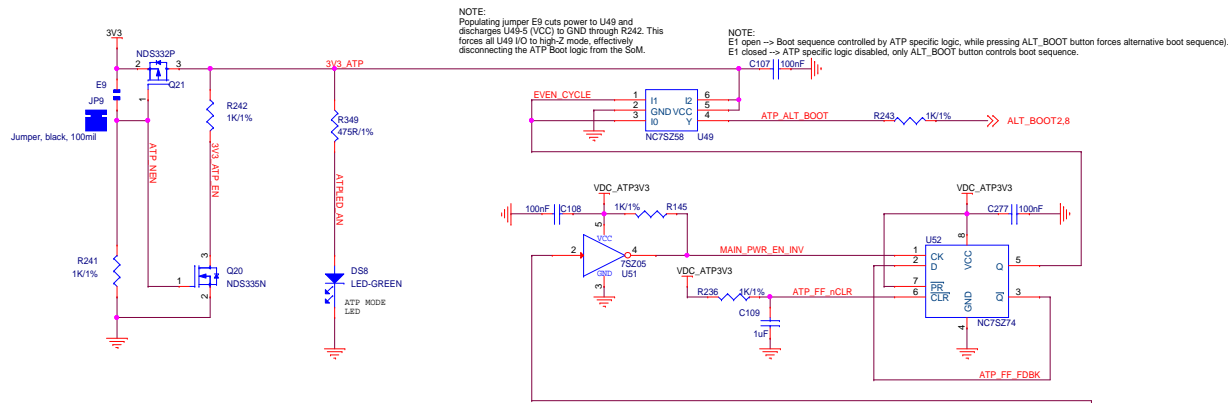
## OTHER



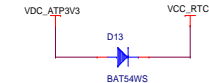
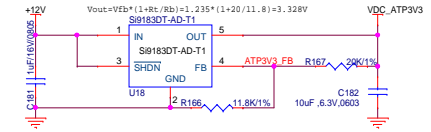




## Boot sequence auto-toggle logic



## Production power rail - always on



## Board power-cycle logic

