

SBEV-UCMIMX8PLUS

Page	Description
01	Index and Block Diagram
02	SOM connectors
03	Console and UCM Ethernet
04	Carrier-board Ethernet
05	USB #1 and SDP
06	USB #2 and mini-PCIE
07	LVDS and MPI-DSI
08	HDMI and MIPI-CSI
09	Audio codec
10	UART, CAN, SPI, JTAG, EEPROM, GPIO exp
11	M.2 for WiFi module
12	Power
13	Mechanical

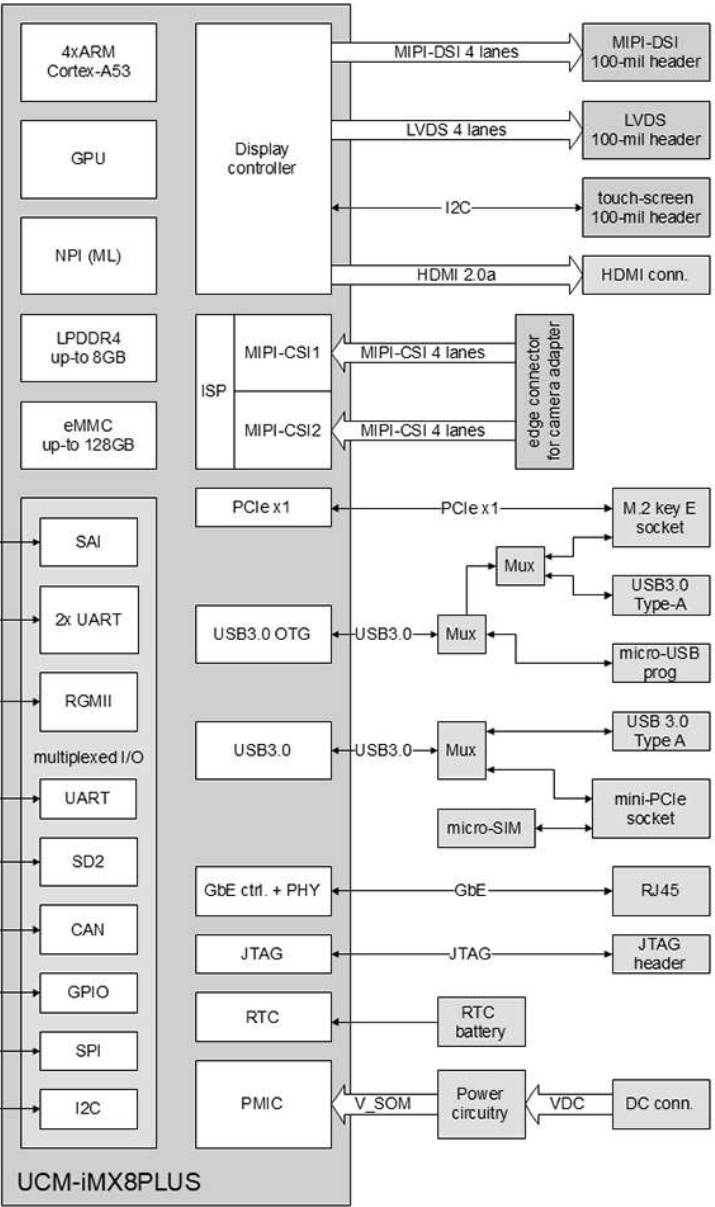
CH #	I2C devices
I2C3	EEPROM, PCA9500, codec, touch,
I2C5	Camera
I2C5	Camera

PCB1

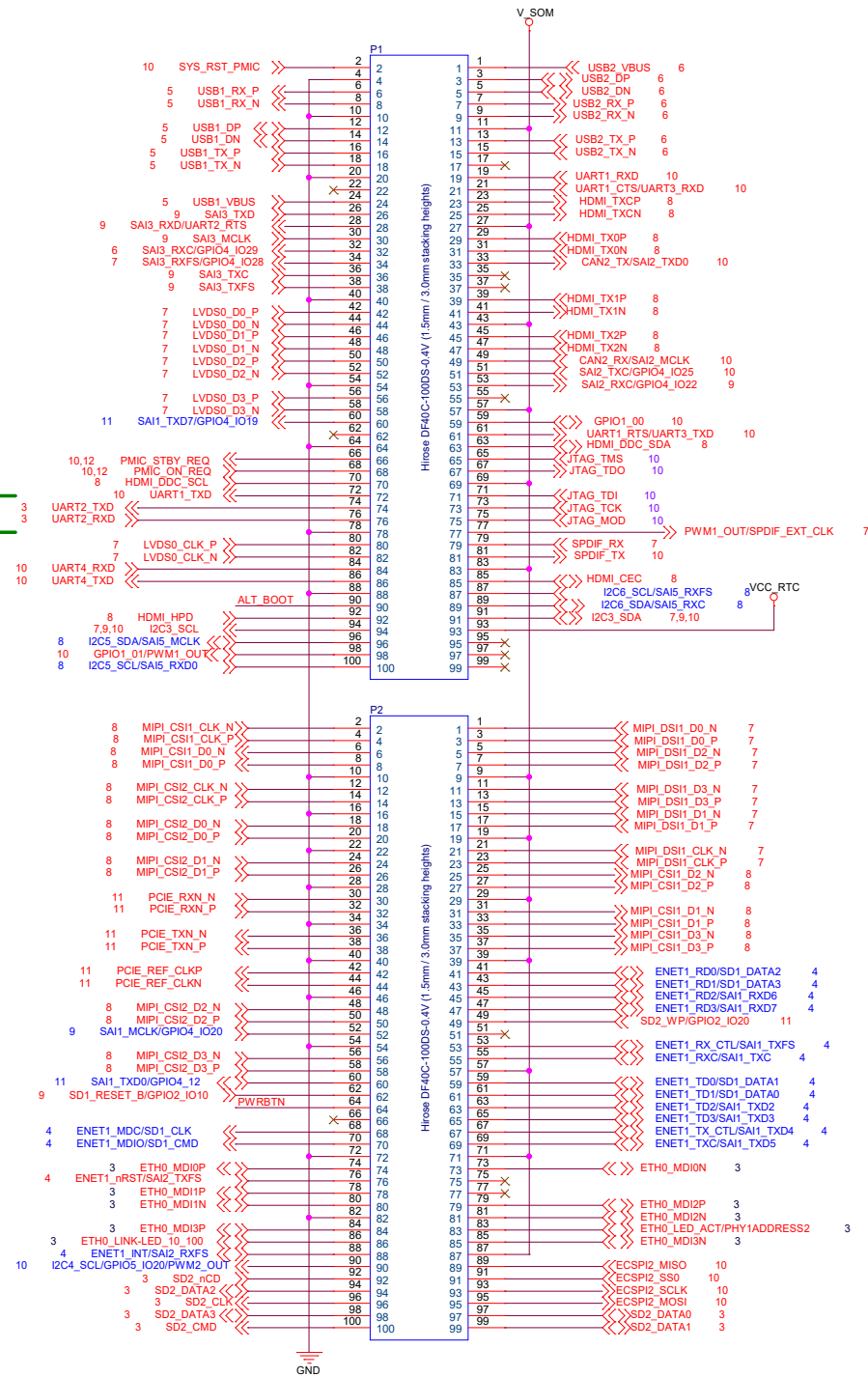
ZZ1

PCB, SBEV-UCMIMX8PLUS, Rev 1.0
PIN = 188C04560

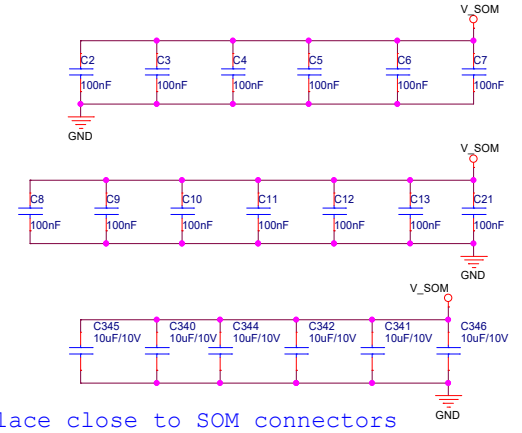
PARSER_VERSION_1.0



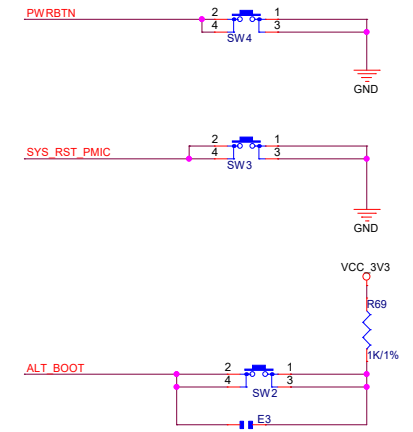
main console



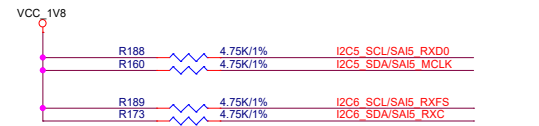
V-SOM capacitors



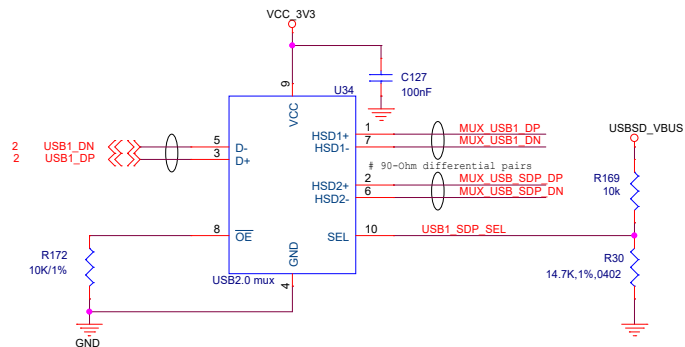
Buttons



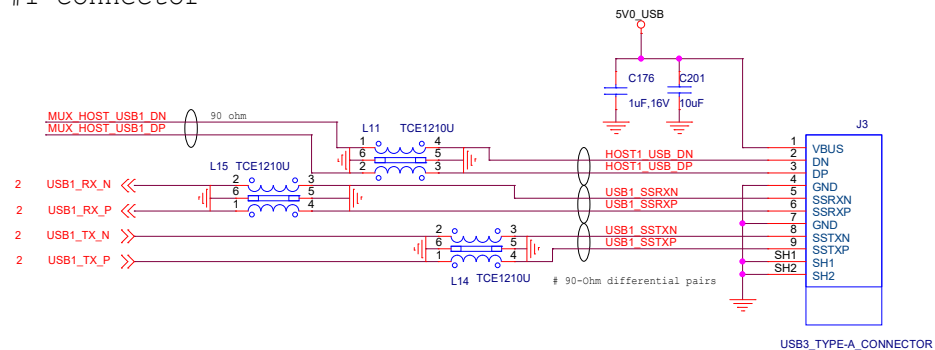
I2C pull-up resistors



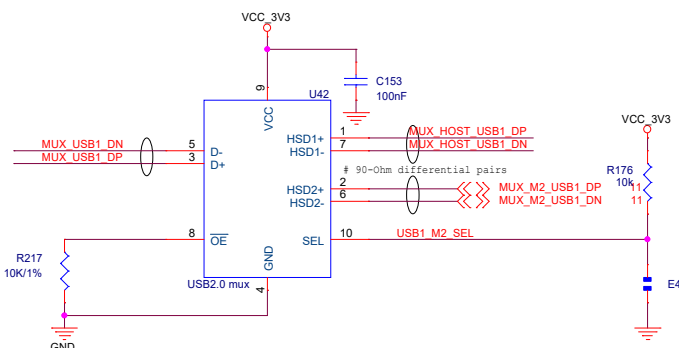
USB #1 SDP mux (USB2 signals only)



USB #1 connector

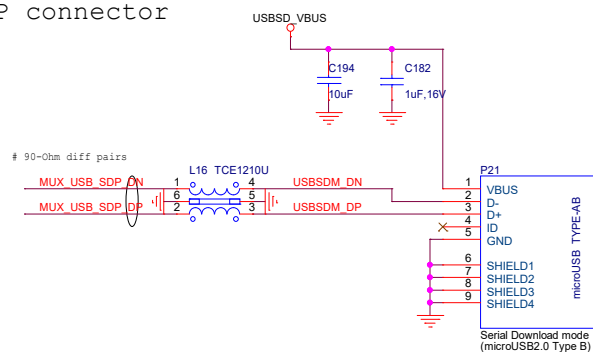


USB #1 M.2 mux (USB2 signals only)

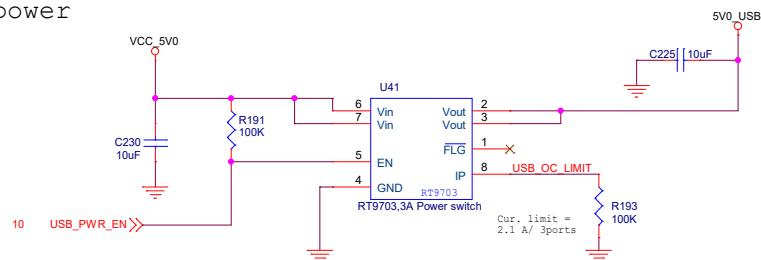


E4 operation
Open: for M.2 socket
Close: for USB conn. J3

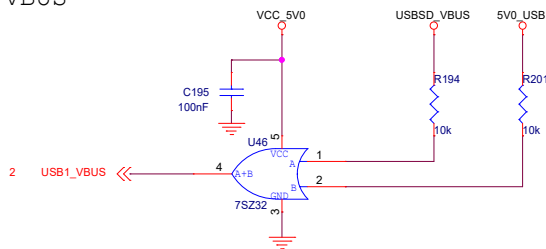
SDP connector



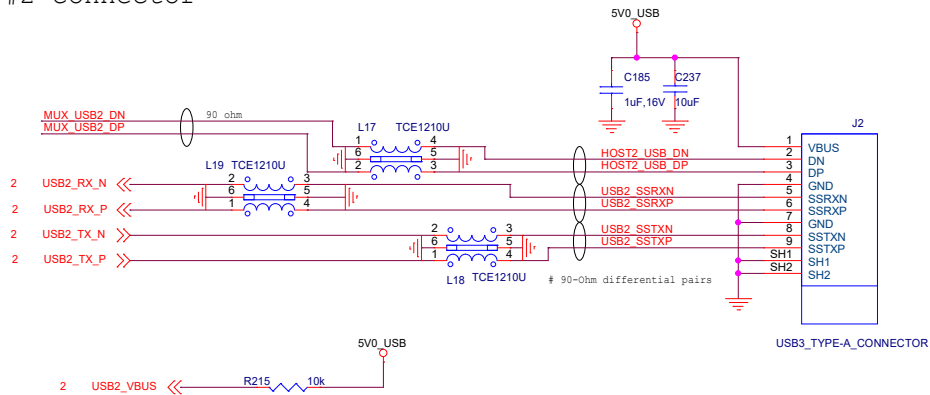
USB power



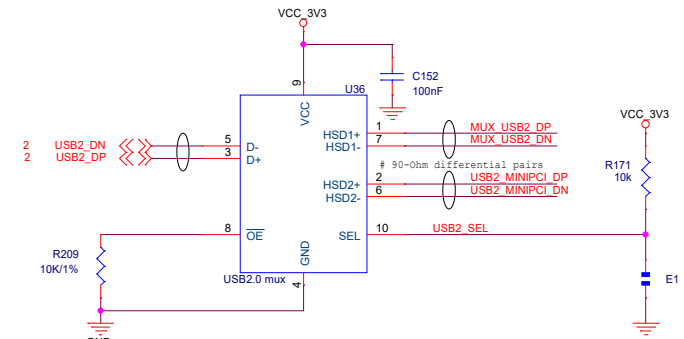
USB VBUS



USB #2 connector

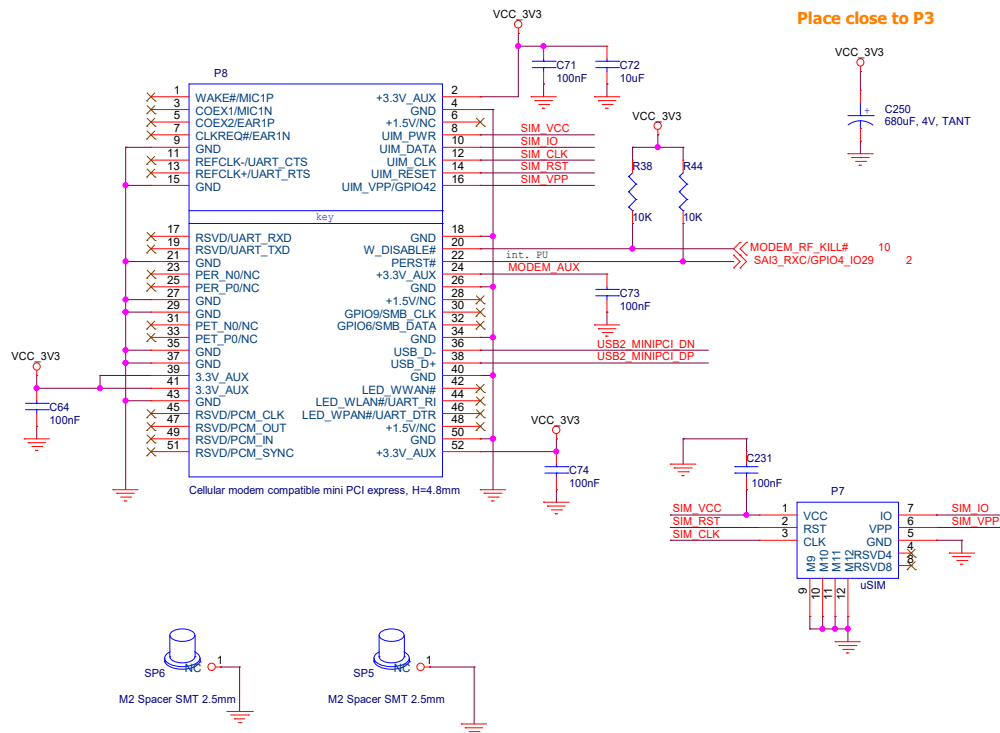


USB #2 mux (USB2 signals only)

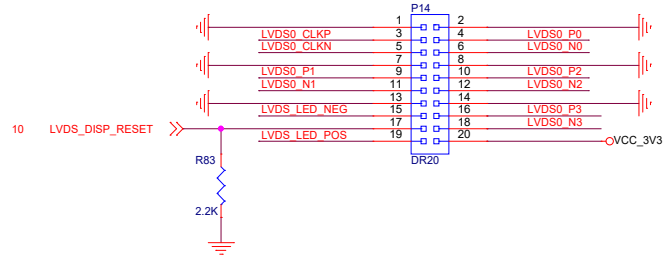
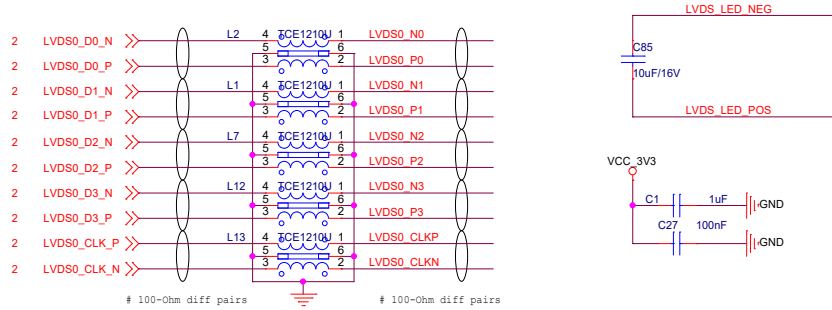


E1 operation
 Open: for miniPCie socket P3
 Shorted: for USB conn. J2

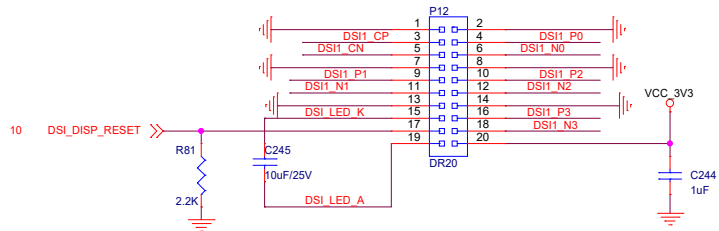
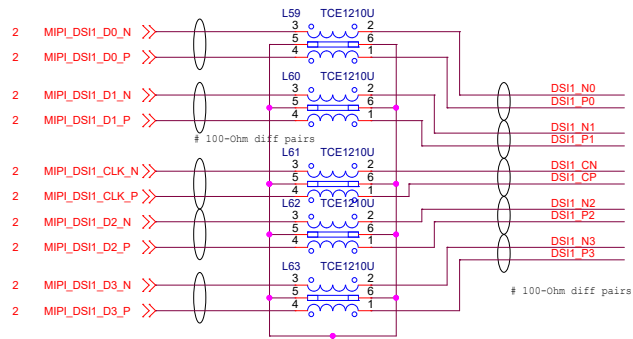
mini-PCIe socket



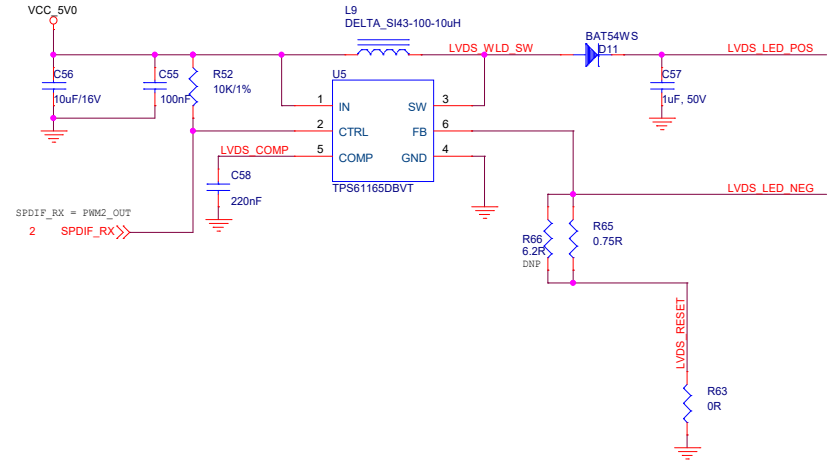
LVDS connector



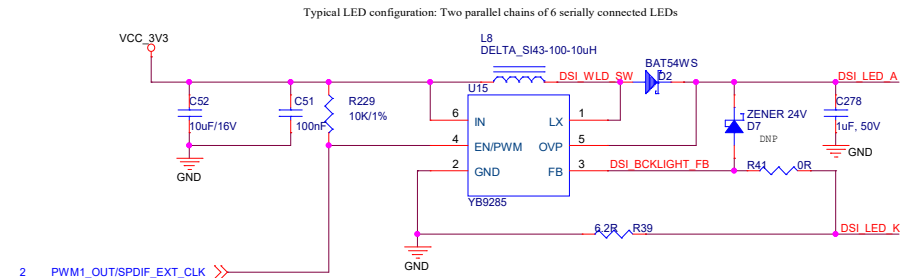
MIPI-DSI connector



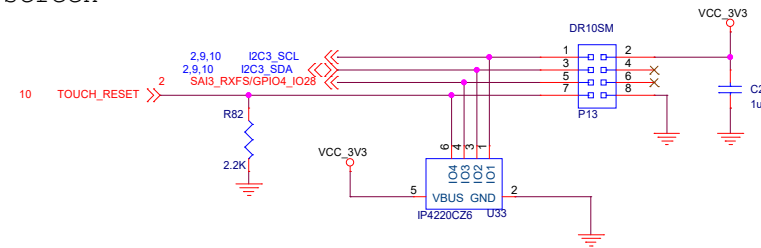
LVDS panel back-light



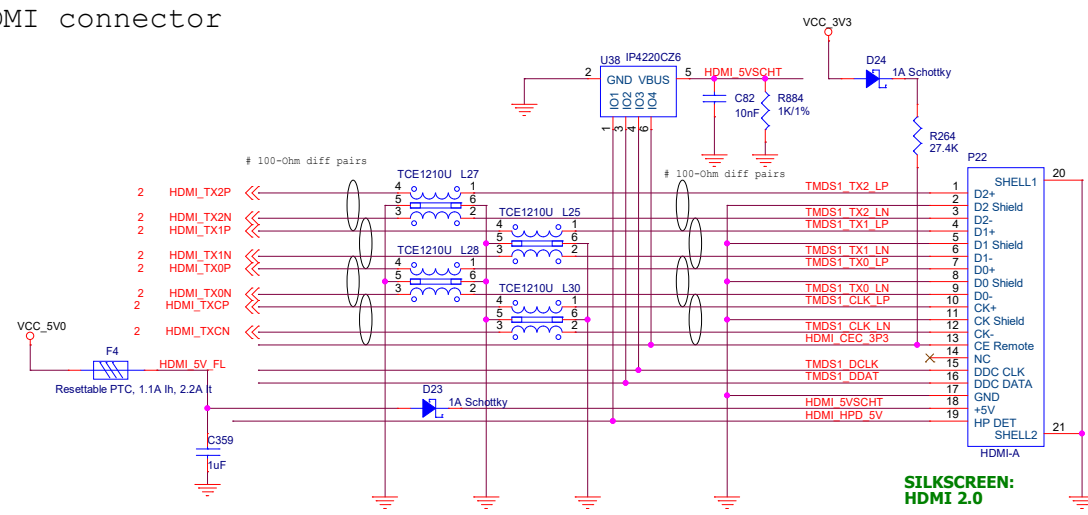
MIPI-DSI panel back-light



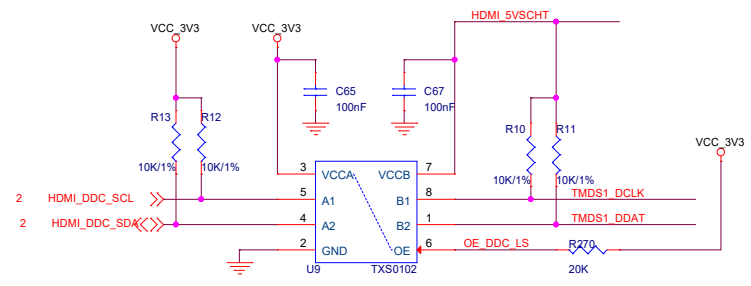
Touch-screen



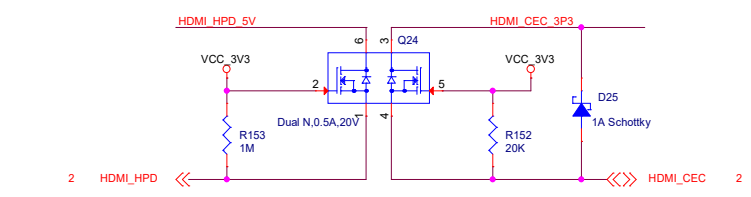
HDMI connector



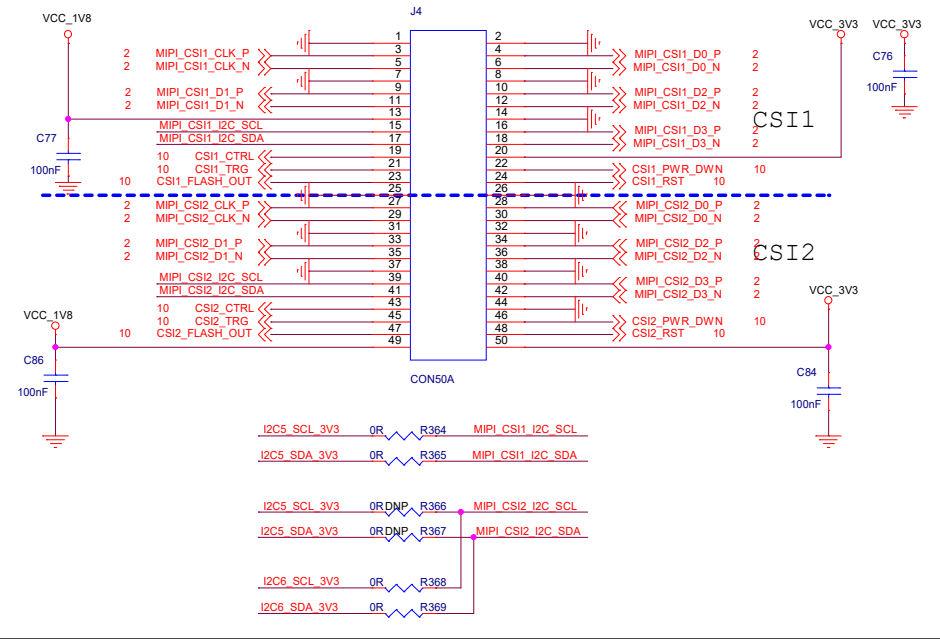
DDC level shifter



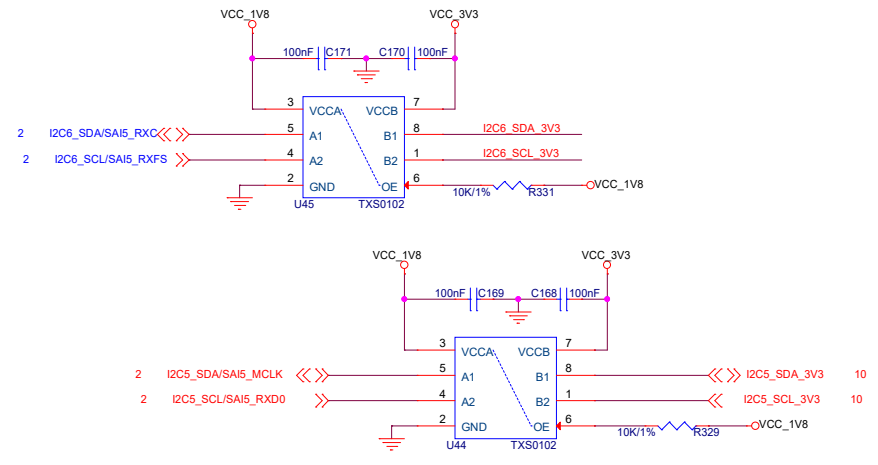
HPD and CEC level shifter

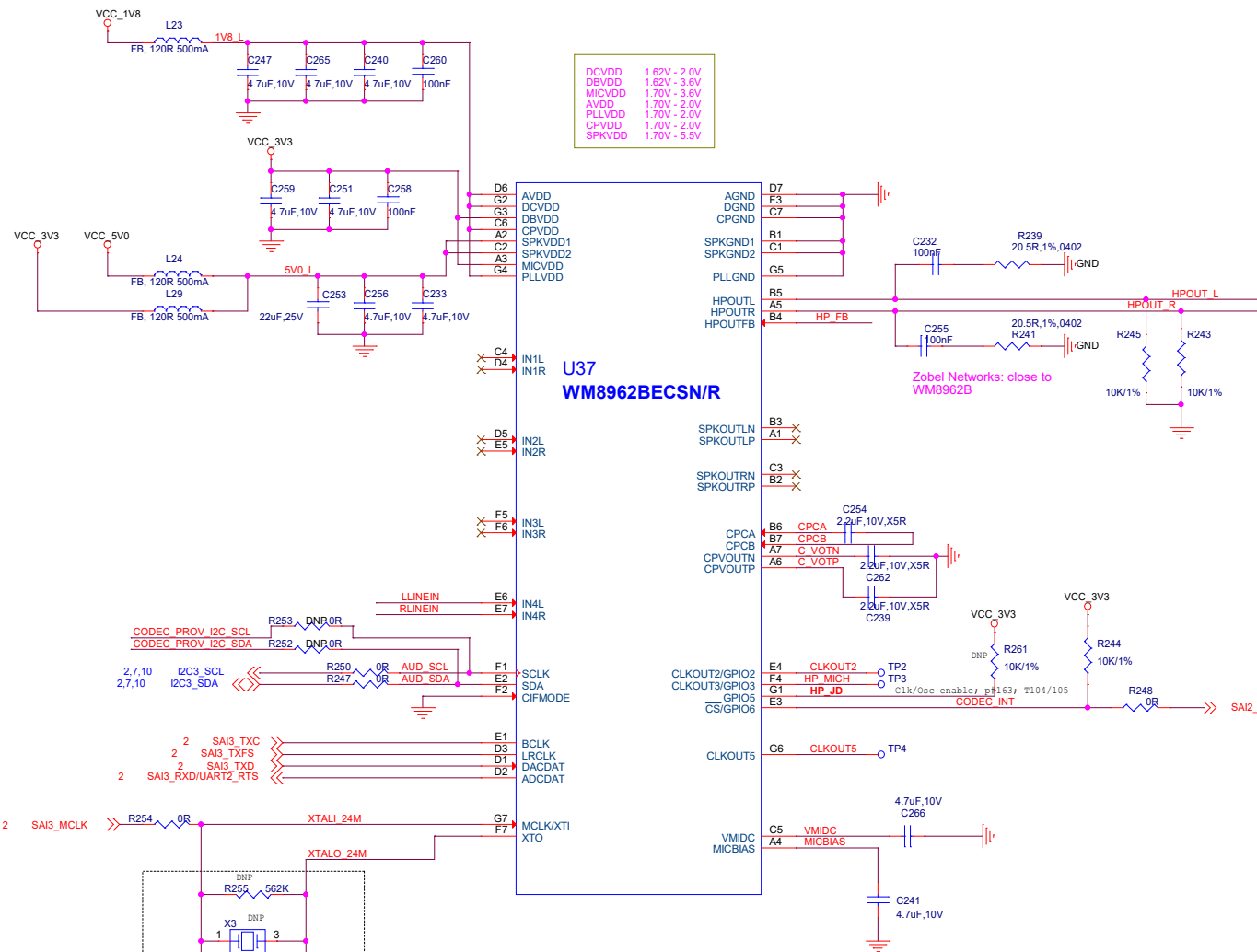


Camera Edge Connector

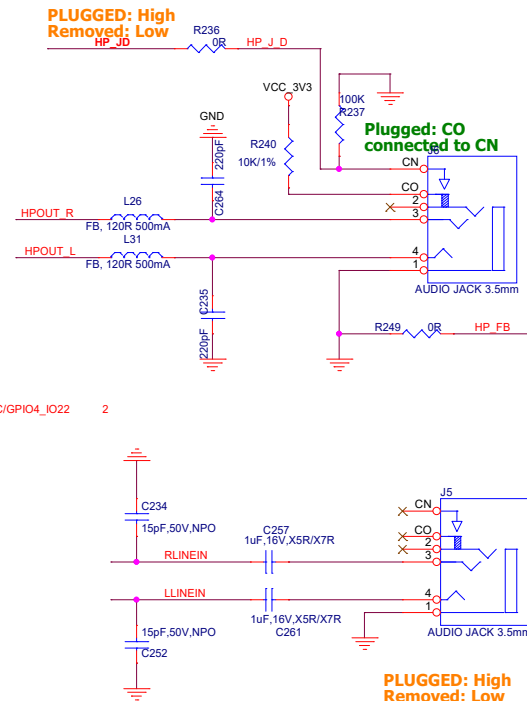
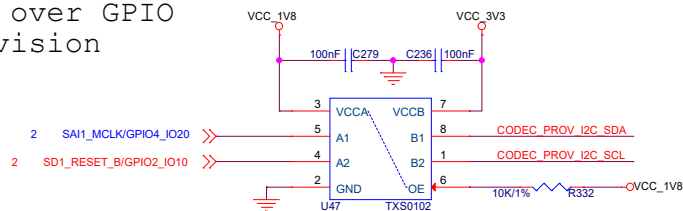


I2C level shifters

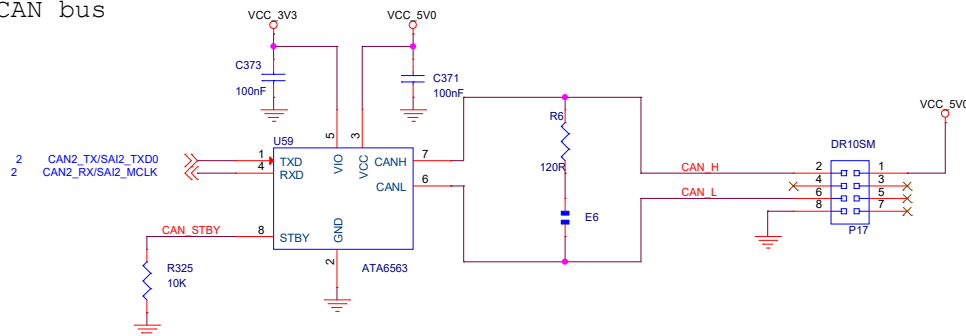




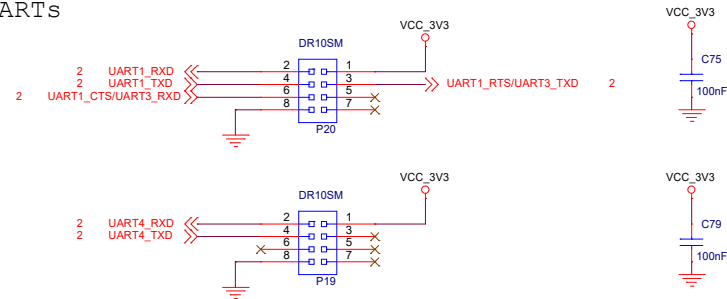
I2C over GPIO provision



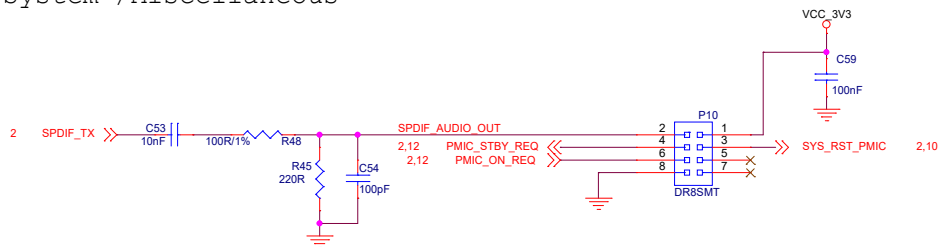
CAN bus



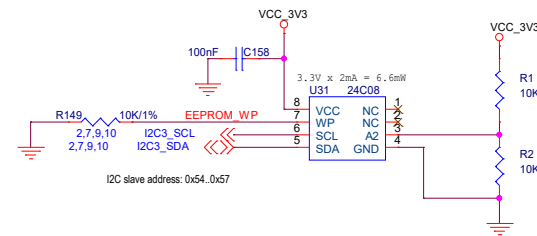
UARTs



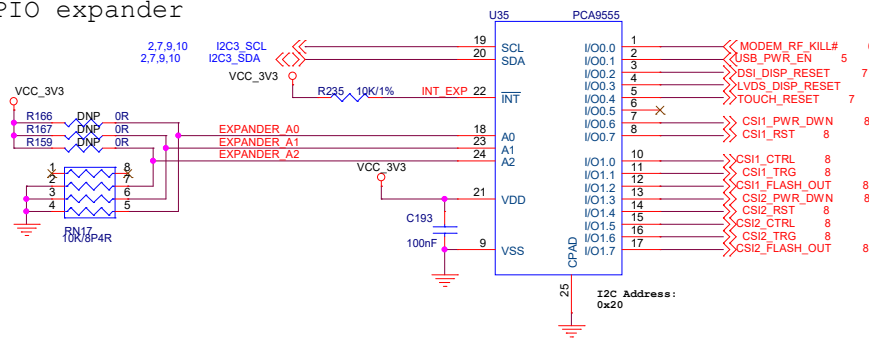
System /Miscellaneous



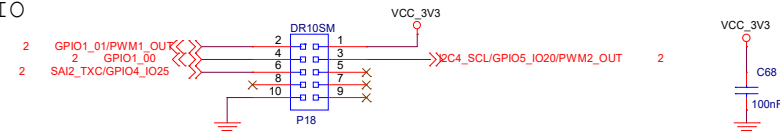
EEPROM



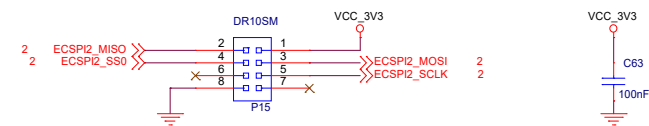
GPIO expander



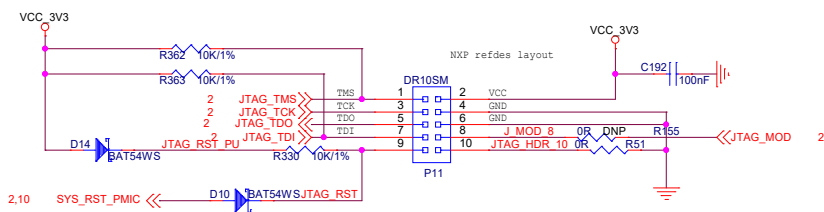
GPIO



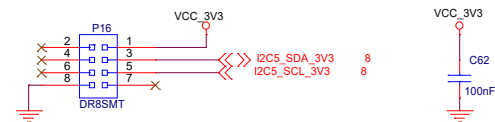
SPI



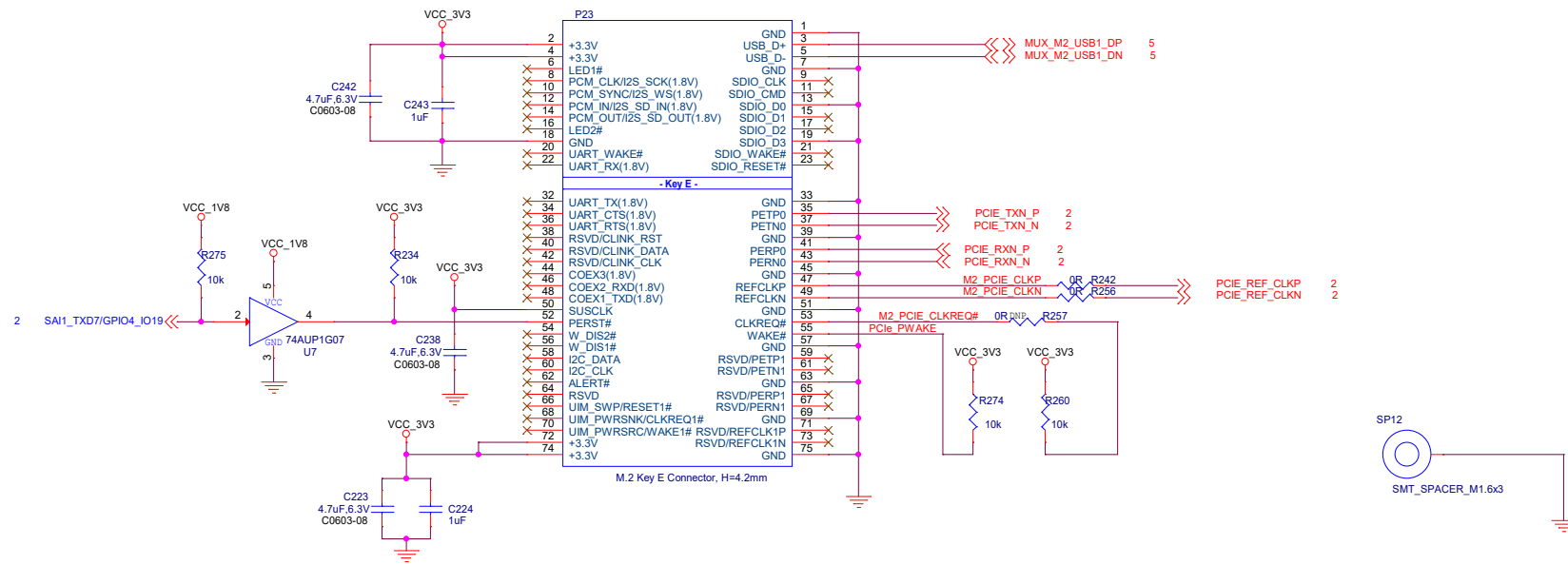
JTAG



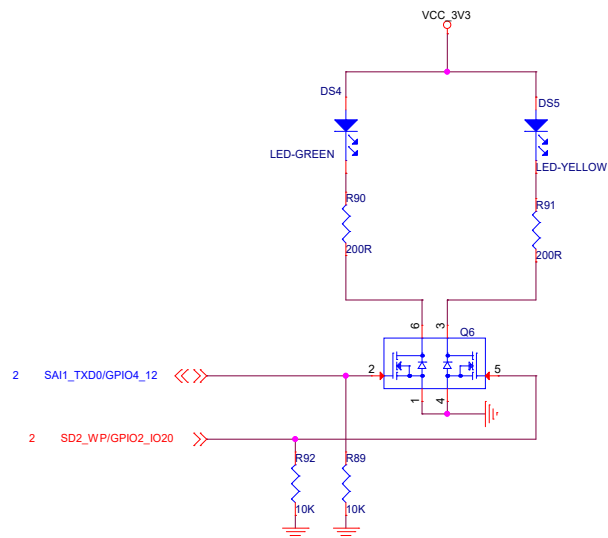
I2C



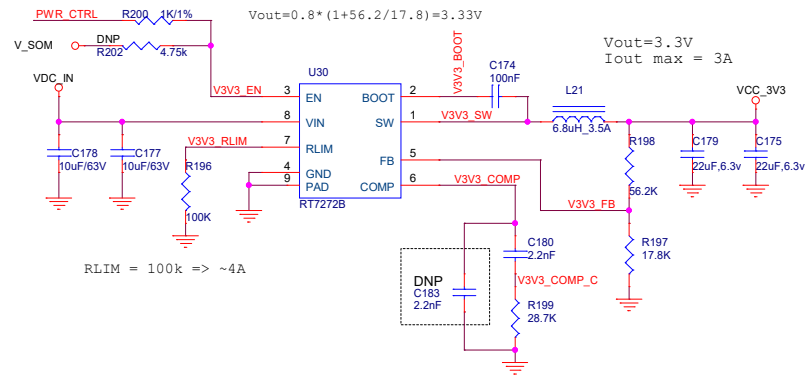
M.2 for WiFi module



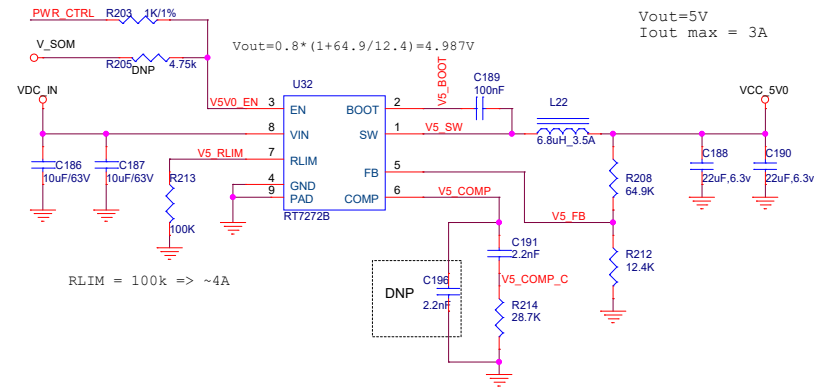
User LEDs



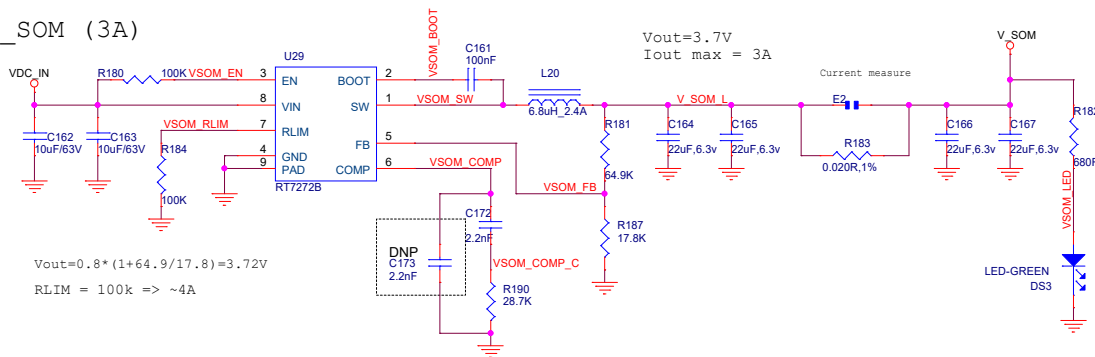
VCC_3V3



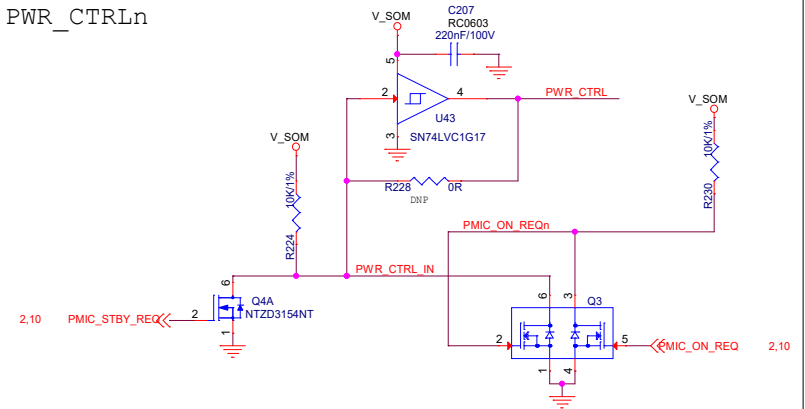
VCC_5V



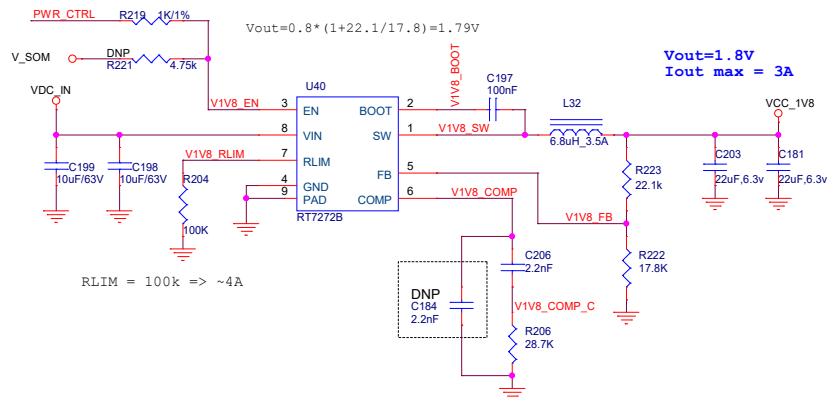
V_SOM (3A)



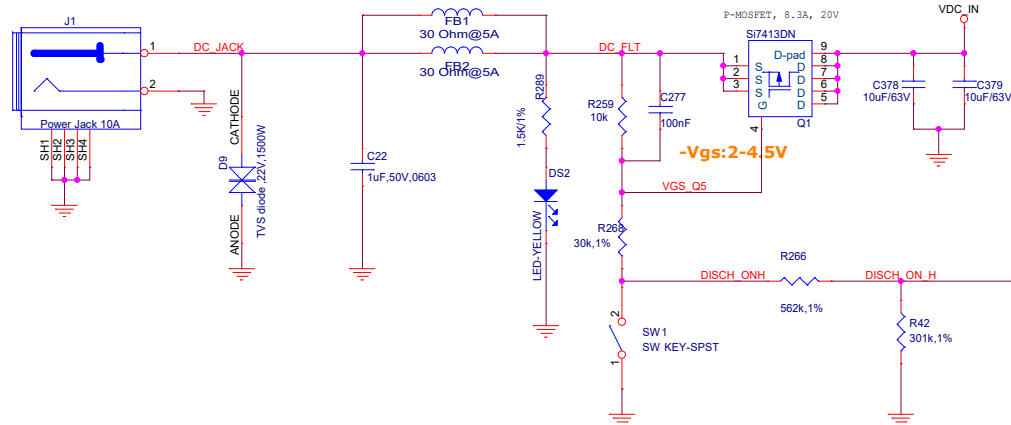
PWR_CTRLn



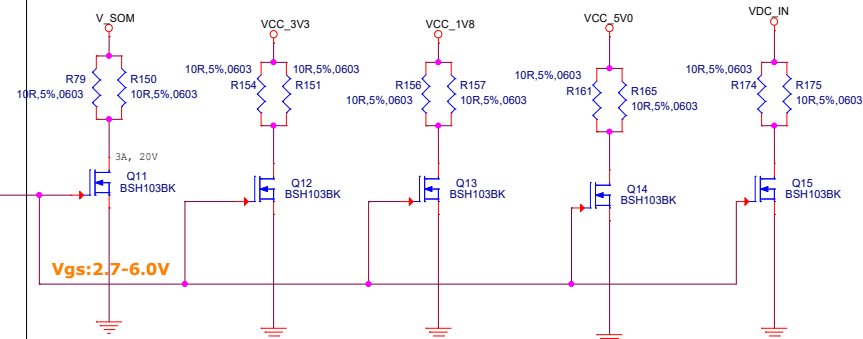
VCC_1V8



DC input Vin 8V-18V



Discharge



RTC battery

